

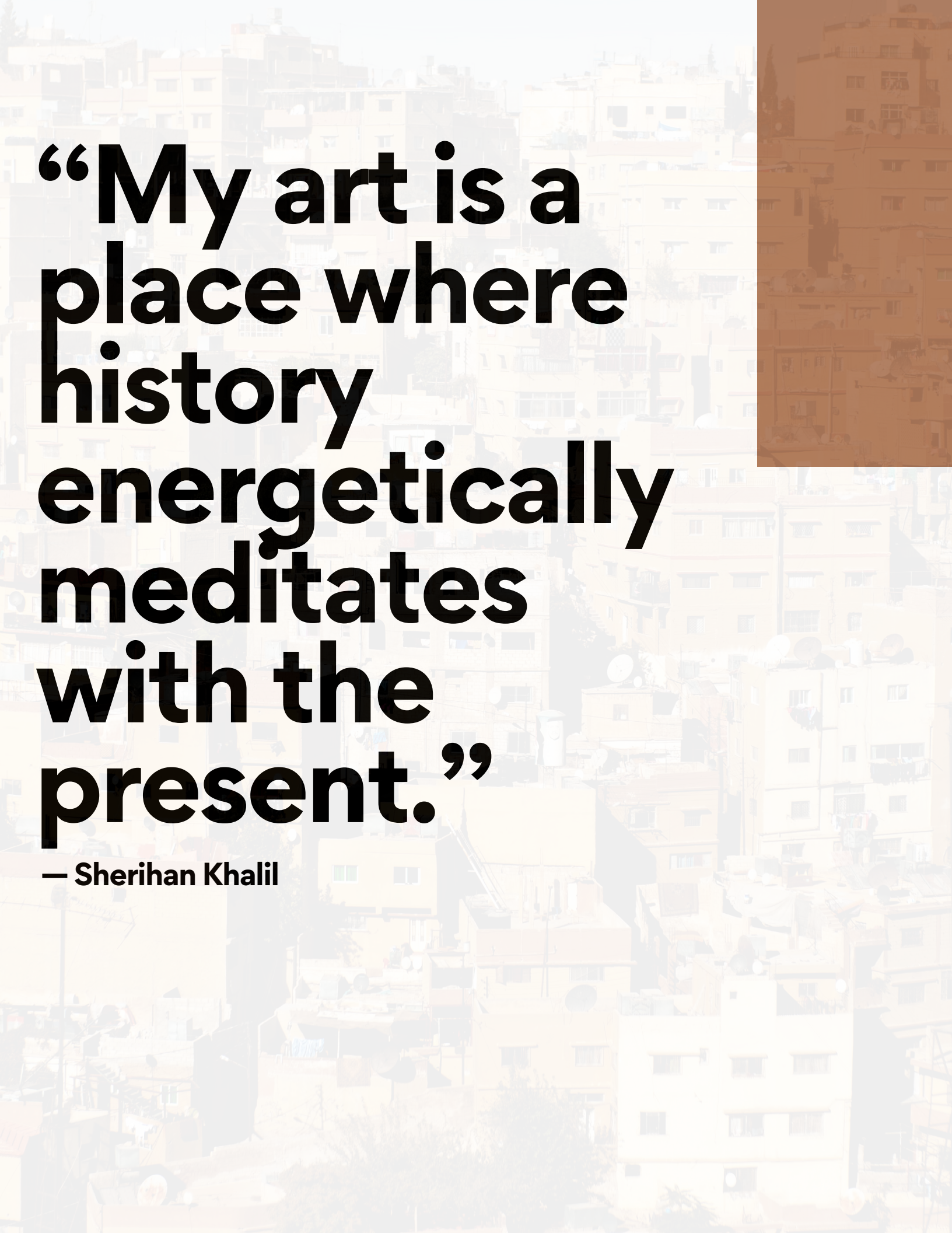


Sherihan Khalil

Cultural Excavator

Hamptons Fine Art Fair
July 10-13, 2025





**“My art is a
place where
history
energetically
meditates
with the
present.”**

— Sherihan Khalil

About the Artist

Sherihan Khalil is a multidisciplinary artist whose work explores the delicate balance between human existence, cultural heritage, and ecological preservation. Born and raised in New York City to Egyptian parents, Khalil's practice is deeply informed by her global perspective and years working in education and community development across marginalized and fragile contexts. Khalil's work has been exhibited internationally and is currently building critical recognition within the contemporary art community.

Her artistic journey began in 2009 as a personal means of processing experience, eventually evolving into a vibrant, research-driven practice focused on the intersections between geological and political histories, mysticism, and the preservation of natural and cultural landscapes. Using materials such as acrylic, oil, copper, papyrus, hibiscus, and Egyptian linen, Khalil approaches her work as intuitive energy-mapping—creating layered “mindscape imprints” that evolve from internal dialogue into bodies of research-informed pieces.

Influenced by Anselm Kiefer, abstract expressionism, land art, and color field painting, her compositions often feature sinewy topographical lines and abstract forms that question the limits of language, borders, and identity. Khalil's recent shift in scale and her experimentation with natural pigments and organic materials have further expanded her visual vocabulary. In 2024, she apprenticed under Iranian sculptor Abass Abassi and is now incorporating sculpture into her evolving practice.

Untitled I, 2025 (Early Hatchings Series)



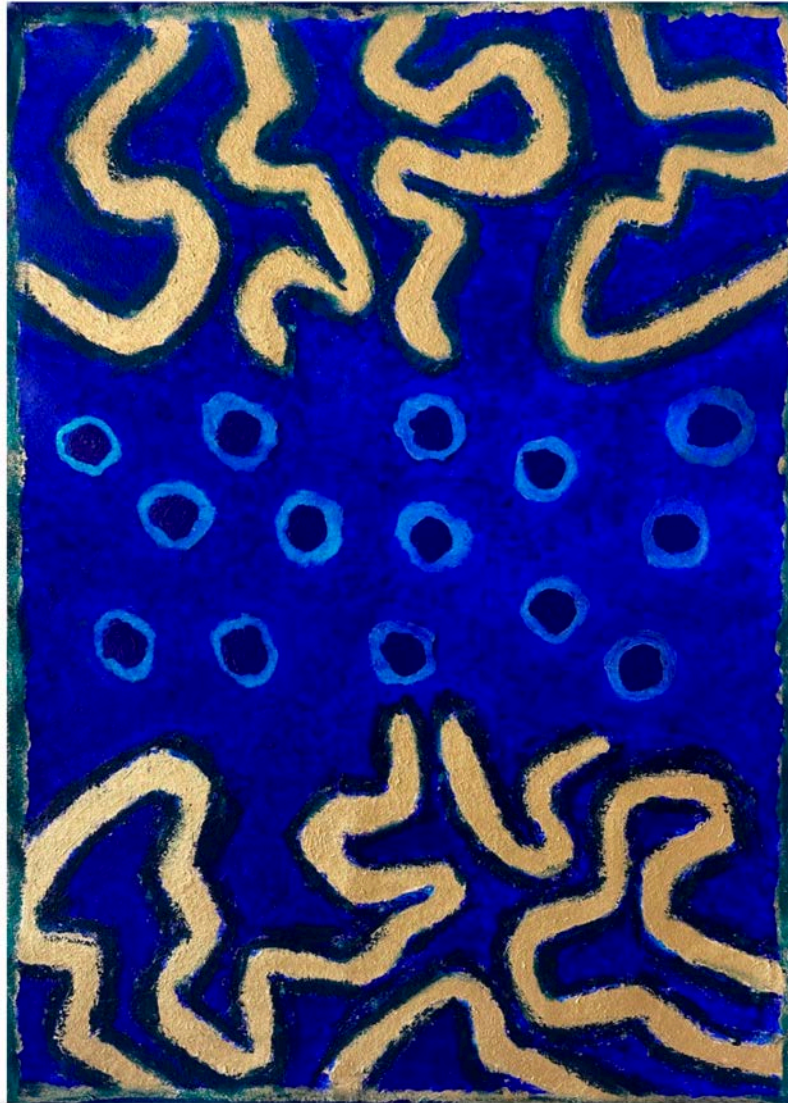
ADD TO YOUR COLLECTION

Medium: Copper and gold leaf, marble powder, oil, acrylic on canvas

Dimensions: 70 cm × 98 cm

Year: 2025

Price: \$8,500 USD



Untitled I opens Sherihan Khalil's Early Hatchings Series, where shimmering materials and primordial forms signal a search for origin and order. Through the interplay of rich cobalt tones, metallic leaf, and organic linework, Khalil invokes the aesthetics of ancient cosmologies and embryonic growth.

This composition evokes cellular structures, ancestral cartography, and symbolic systems beyond spoken language. The golden curves and floating blue orbs suggest a ritual diagram—perhaps a map of energy, a constellation, or a code for a language long lost to time.

Untitled II, 2025 (Early Hatchings Series)



ADD TO YOUR COLLECTION

Medium: Oil, acrylic, papyrus on canvas

Dimensions: 70 cm x 98 cm

Year: 2025

Price: \$6,000 USD



Untitled II continues the Early Hatchings Series by Sherihan Khalil, capturing the elemental spark of life at its symbolic genesis. A dramatic crimson bloom emerges from a textured form, grounded in a vessel-like structure of cobalt and midnight tones—each mark asserting a rhythmic, almost mythological cadence.

Wonderment Diptych, 2023



ADD TO YOUR COLLECTION

Medium: Mixed media on paper

Dimensions: Each panel is 104 cm × 147 cm

Year: 2023

Price: \$7,000 USD



Wonderment Diptych is a bold psychological tableau by Sherihan Khalil—two figures locked in an unspoken exchange across a radiant void. The left panel features a wide-eyed form with a small silver fish held gently in its mouth, while the right panel presents a confronting profile, its gaze fixed and unblinking. Together, they oscillate between humor and confrontation, innocence and surrealism.

Epochgraphy III



ADD TO YOUR COLLECTION

Medium: Acrylic on paper
Dimensions: 106 cm (w) x 159 cm (h)
Year: 2024
Price: \$6,000 USD



Part of Sherihan Khalil's Epochgraphy Series, Epochgraphy III offers a bold yet contemplative exploration of the visual and spiritual echoes between prehistoric art and contemporary mark-making. Inspired by her visit to the ancient caves of Shanidar, Iraq, Khalil's piece blends organic line work and symbolic patterning to evoke the primal language of early human expression.

Using gestural spirals, dots, and rhythmic linear forms in earthy oranges and deep violets on a warm neutral ground, Khalil reimagines the relationship between natural energy and historical memory. The work conveys both movement and stasis, with flowing pathways and fractured edges suggesting the passage of time and the fragility of cultural permanence.

Citizens, 2023



ADD TO YOUR COLLECTION

Medium: Oil on canvas

Dimensions: 70 cm × 50 cm

Year: 2023

Price: \$6,000 USD



In *Citizens*, Sherihan Khalil presents a crowd as a single rhythmic force—rows of abstracted, humanoid forms painted in thick white strokes against a deep crimson-burgundy backdrop. Each figure is reduced to essential gestures: bent knees, bowed heads, and circular skulls, creating a field of motion and silence all at once.

Untitled 66, 2025 (Language Series)



ADD TO YOUR COLLECTION

Medium: Acrylic and oil on canvas

Dimensions: 131 cm (w) x 18 cm (h)

Year: 2025

Price: \$7,500 USD



Untitled 66 forms part of Sherihan Khalil's evocative Language Series, an ongoing meditation on communication, identity, and transcendence. Using her distinctive topographical line formations, Khalil explores the deconstruction of language into abstract gestural symbols. The flowing spirals, curves, and intersecting shapes suggest a universal visual language that seeks to exist beyond traditional cultural or linguistic boundaries.

Untitled 818, 2025 (Language Series)



ADD TO YOUR COLLECTION

Medium: Acrylic and oil on linen
Dimensions: 38 cm (w) x 18 cm (h)
Year: 2025
Price: \$8,500 USD



Untitled 818 continues Sherihan Khalil's Language Series, where topographical abstraction meets spiritual inquiry. This work moves beyond traditional notions of language, exploring the primal forms of communication that predate spoken words. Rendered in luminous greens and deep oranges against a softly textured background, the composition pulses with biomorphic energy.

Khalil uses signature swirling forms and linear meanderings to reflect the story of evolutionary progression—from simple organisms to complex beings—while hinting at the cyclical return of consciousness to a universal whole. The spirals that recur across the canvas serve as visual metaphors for growth, connectivity, and transcendence.

This piece embodies Khalil's deep belief in the interconnectedness of all life forms, highlighting a tension between natural forms and cultural constructs. The viewer is encouraged to read the work as a meditation on what we gain and lose in our human pursuit of knowledge, language, and power over nature.

Petri Dish Dino Diptych, 2024



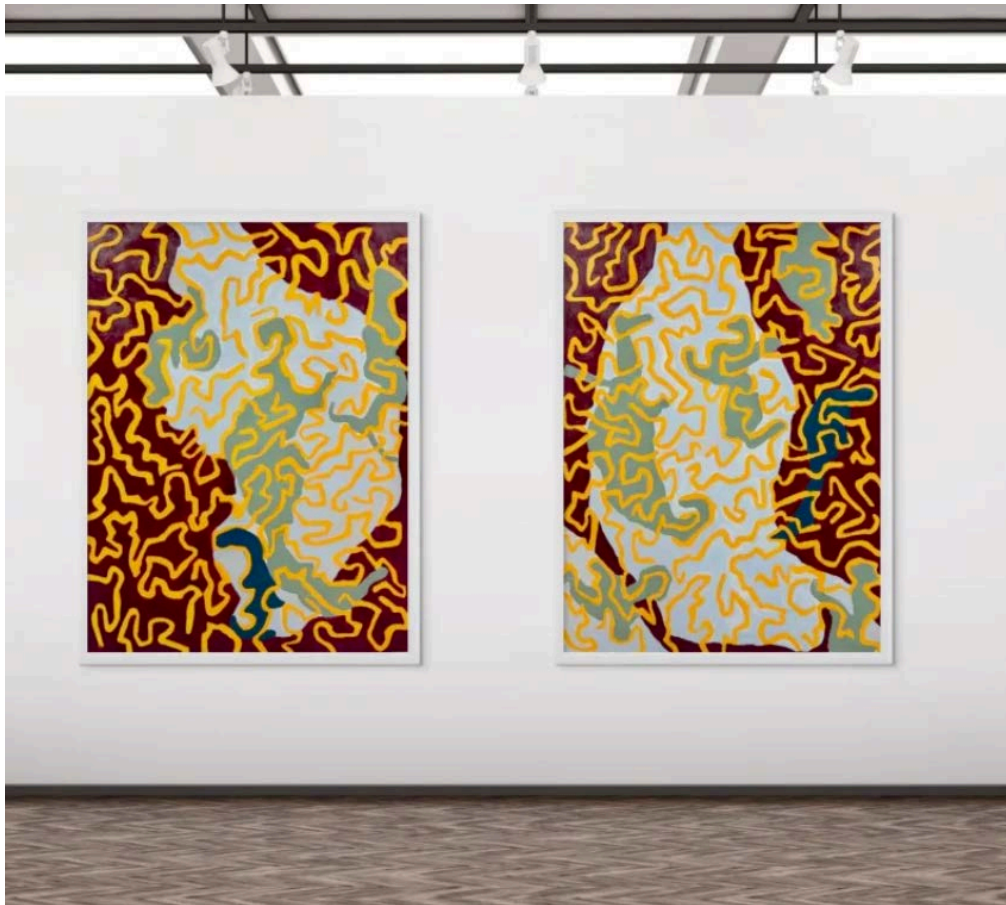
ADD TO YOUR COLLECTION

Medium: Acrylic on canvas

Dimensions: Each panel is 89 cm × 119 cm

Year: 2024

Price: \$13,000 USD



In *Petri Dish Dino Diptych*, Sherihan Khalil fuses abstract systems with biological memory, layering snaking yellow forms atop soft cellular backgrounds. The twin panels feel alive—an aerial scan of microbial terrain, fossilized chaos, or prehistoric imprints suspended in time.

Bushwick Gallery

Bushwick Gallery is a contemporary art space located in Brooklyn's vibrant Bushwick neighborhood. The gallery champions innovative and diverse artistic expression, offering a personalized, appointment-only experience that allows visitors to deeply engage with thought-provoking works.



Situated in an area known for its cutting-edge artistic vibe, Bushwick Gallery features a wide array of exhibitions showcasing both renowned and emerging artists from around the globe. The gallery's program includes various media such as paintings, sculptures, and installations, each exhibition designed to inspire and challenge perceptions.

